



# WashPod

A Solution by Dignity Access

## **The Quick, Re-useable Answer to Disabled Bathing for Local Authorities using our unique Turnaround Service**



**The WashPod temporary disabled wetroom range will give you sustainable solutions to meet many disability needs including hospital discharge and end-of-life**

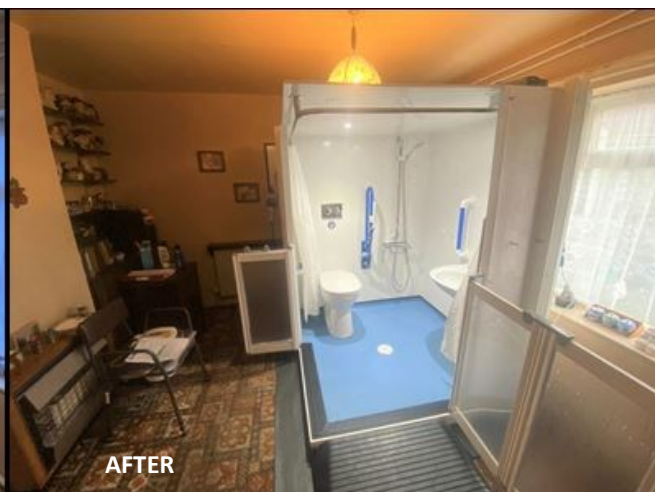
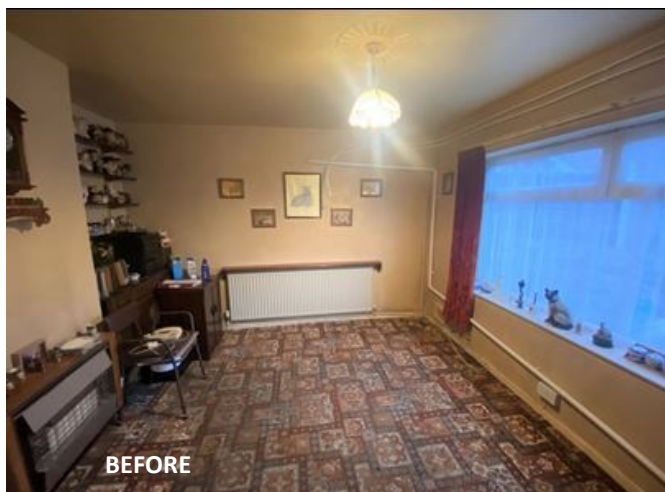


# A Complete One-Stop Shop Service With Only A Single Capital Outlay



## The Turnaround Service

- ♦ The WashPod temporary accessible wetroom can be bought through a Disabled Facilities Grant (DFG) or other Local Authority Grants for Disabled Adaptations
- ♦ It can be installed in just a day or two depending on the model.
- ♦ Properties can be returned to their original state quickly on removal and the WashPod re-used elsewhere
- ♦ We manage everything for a fixed price fee from pre-install, installation, routine maintenance, removal, deep-clean, refurbishment, and secure storage for up to 18 months.
- ♦ The WashPod has a long life-time and can be re-installed time after time saving valuable funds
- ♦ Meets many DFG Guidance criteria



## WashPod Sizes

WashPod Model	Internal Dimensions	Internal m2	External Footprint
External Large	3.5m x 2.5m	8.75	4.0m x 3.25m
External Standard	2.4m x 2.4m	5.88	3.2m x 2.4m
External Compact	2.4m x 1.5m	3.60	3.2m x 2.0m
Internal Large	3.5m x 2.5m	8.75	3.6m x 2.9m
Internal Standard	2.45m x 2.2m	5.39	2.8m x 2.3m
Internal Compact	1.50m x 1.5m	2.25	1.9m x 1.6m
Internal Mini	1.5 m x 1.2m	1.80	1.75m x 1.3m
Internal Micro	1.50m x 0.9m	1.35	1.6m x 1.4m

## The Benefits of a WashPod as an Interim Solution

- ◆ Gives flexibility as it can be put in and taken out as quickly without major adaptations
- ◆ Short lead times to overcome contractor delays
- ◆ Provides a cost-effective, sustainable alternative to extensions or major adaptations
- ◆ No major planning or structural adaptations and they're Plug 'n Play
- ◆ Installed and removed by WashPod experts
- ◆ High specification so minimal maintenance
- ◆ Seven internal and external models to suit most needs and spaces.
- ◆ Can be adapted to suit client-specific needs with hoists/wash-dry toilets etc
- ◆ Temporary and modular accommodates children's changing needs
- ◆ Nationwide service



## WashPod Prices and our Turnaround Service

**Just one capital outlay buys the WashPod and our fixed price turnaround service covers the following:**

- ◆ Initial virtual survey to confirm model suitability
- ◆ Site survey and feasibility plans
- ◆ Pre-install and site set-up to ensure perfect fit each time
- ◆ Installation, commissioning and handover
- ◆ Managed maintenance, servicing and call outs\*
- ◆ Removal and making good
- ◆ Factory refurbishment and deep-clean so it's ready to reuse
- ◆ Storage facility for up to 18 months

WashPod cost between £23,500 and £65,000\* depending on the model and whether it's an external or internal version.

\* prices & terms at January 2025  
(and may be subject to change)



## “Testimonials”

*“North Somerset Council recently installed an Internal Compact WashPod on the Dignity Access DFG Turnaround Service under the terms of a DFG.*

*The Occupational Therapists’ Team were very impressed by the speed and ease with which we now have a great washing solution for someone who needs it, in their own home. This proved to be an excellent solution for all parties involved”.*

**Stephen Philp, Senior Adaptation and Improvement Officer, North Somerset Council**

*“I can’t even express with words how great a company it is and how well the WashPods work for my clients and give them satisfaction!”*

**Fahima Ali, Senior Occupational Therapist, Adult Services, Lancashire County Council**

*“The WashPod was an excellent solution for the situation. This allowed us to retain a child safely in a secure environment during an extremely difficult time where the family were isolated and unable to access basic washing facilities.”*

**Jane Quinn, Team Leader, South Lanarkshire Health & Social Care Partnership**

### Meeting DFG Guidance

- ♦ Recycle, Re-use and Value for Money (4.40—4.41)
- ♦ Motor Neurone Disease (3.14—3.15)
- ♦ Working with Private Landlords (3.16—3.17)
- ♦ Flat-pack Extensions (5.22-5.23)
- ♦ Capital Expenditure (Appendix A) - removeable equipment
- ♦ Access to a toilet, bath, shower or wash hand basin (Appendix B74)
- ♦ Necessary & Appropriate—to meet current/future needs (B62) and be easily removed if appropriate (B67)



### Just some of the teams we’re working with



**www.dignityaccess.co.uk**

**Tel: 07708 173397/ 01342 410242**

**info@dignityaccess.co.uk**

